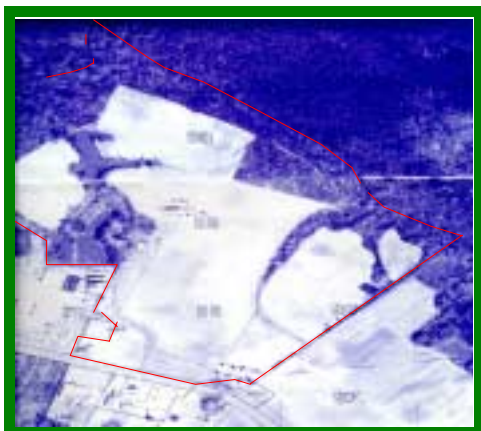


Chesson Site
 Martin County, North Carolina

210 Acres



Sales Price	\$6,500/ acre
Address	Highway 125
City	Williamston
State	NC
Zip Code	27892
In City Limits	No
Development Stage	Partially
Zoned	Not Zoned
Present Use	Farmland
Type of Location	Industrial Area

Utilities

Electric Service Provider	NC Power	Water Service Provider	Town of Williamston
Gas Service Provider	NC Natural Gas	Water Main Size	2-12"
Natural Gas Extension Feasible	Yes	Storage Tanks	Yes
Main Size (in)	8"	Waste Water Treatment Service	Town of Williamston
Phone Service Provider	Sprint	Treatment Type	Anaerobic
		Receiving Line Size	24"

Transportation

Four Lane Highway within 20 Miles	Yes
Closest Highway	US Highway 64
Distance to Highway	8 Miles
Access Road	Highway 125
Rail Available	No
Rail Service Company	CSX Transportation
Rail Siding	No
Nearest Stream, River, or Creek	Roanoke River



Travel Information to Site

Closest Commercial Airport	Pitt/Greenville Airport	40 Miles
Nearest Interstate Highway	Interstate 95	Approximately 20 minutes
US Highway 64-Bypass is an interstate quality highway.		

Continued

Chesson Site
Martin County, North Carolina

209.64/210 Acres

Travel Information to Site

Closest Commercial Airport	Pitt/Greenville Airport	40 Miles
Nearest Interstate Highway	Interstate 95	Approximately 20 minutes

US Highway 64-Bypass is an interstate quality highway.

For More Information

Martin County Economic Development Corporation
James D. Ward, Executive Director
Post Office Box 310 / 138 West Main Street / Williamston, NC 27892
252-792-2044 - voice / 252-792-0993 - fax / info@martincounty.com